

Kirklees (West)

Policies Map (Accepted Options)
Draft Local Plan - September 2015

Green Belt and Green Infrastructure

- Peak District National Park
- Green Belt
- Strategic Green Infrastructure Proposal
- Urban Greenspace
- Local Greenspace

Housing, Employment & Other Significant Development

- Employment
- Priority Employment Areas
- Housing
- Mixed Use
- Land at Storthes Hall
- Gypsies And Travellers & Travelling Showpeople

Additional Accepted Options

- Safeguarded Land

Heritage Assets

- Archaeological Sites (Class 2)
- Conservation Area
- Registered Battlefield
- Registered Parks and Gardens
- Scheduled Monuments

Minerals & Waste

- Mineral Extraction Site
- Waste Site
- Waste Site (Safeguarded)

Natural Environment

- Special Protection Area
- Special Area of Conservation
- Site of Special Scientific Interest
- Local Wildlife Sites
- Local Geological Sites

Shopping Centres

- Principal Town Centre
- Town Centre
- District Centre
- Local Centre

Transport

- Dept of Transport Highway Scheme

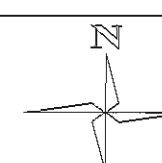
Core Walking, Cycling and Riding Network

- Existing
- Proposed
- Indicative

Transport Scheme

- Improvement to transport hub/junction
- Transport Route Improvement Scheme
- Area subject to transport improvement scheme

* Only sites of 0.4 ha and over are shown.
Site references relate to policies and paragraphs in Written Statement

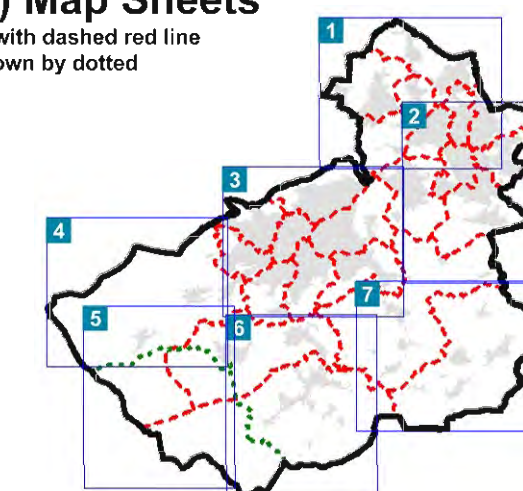


Map scale: 1:15,000 @ A1

© Crown Copyright and database
right 2015. Ordnance Survey 100019241

Index to (A1) Map Sheets

Electoral wards shown with dashed red line
Peak Park boundary shown by dotted
green line



kilometres

Calderdale District

Oldham District